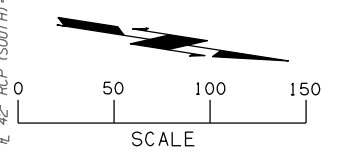


FED. ROAD DIST. NO.	STATE	JOB PIECE NO.	FISCAL YEAR	SHEET NO.	TOTAL SHEETS
6	OKLA.	27050(04)	2017		

DESCRIPTION	REVISIONS	DATE



UTILITY CONTACTS:
 INDIAN NATION FIBER OPTICS 580-355-2300
 AT&T COMMUNICATIONS 580-248-7622
 FORT SILL COMMUNICATIONS 580-248-2060
 FIDELITY COMMUNICATIONS 580-353-2250
 CITY OF LAWTON 580-581-3456
 AMERICAN WATER 580-248-3034
 PUBLIC SERVICES OF OKLAHOMA 888-216-3505
 DEPARTMENT OF PUBLIC WORKS FORT SILL 580-442-3251
 OKLAHOMA NATURAL GAS 580-335-7539
 CENTER POINT ENERGY 580-512-5924

LEGEND

- PROPOSED PAVEMENT
- DRAINAGE STRUCTURE
- BORING LOCATION

BMH43 CHISELED SQUARE
 S.E. COR. S. HDWL
 STA. 396+43, 27' RT.
 EL. 1134.97

BMH44 2" ALUM. CAP
 END OF OVERPASS 1-44
 EL. 1144.60

SEE SHEET 41 FOR RAMP A PROFILE

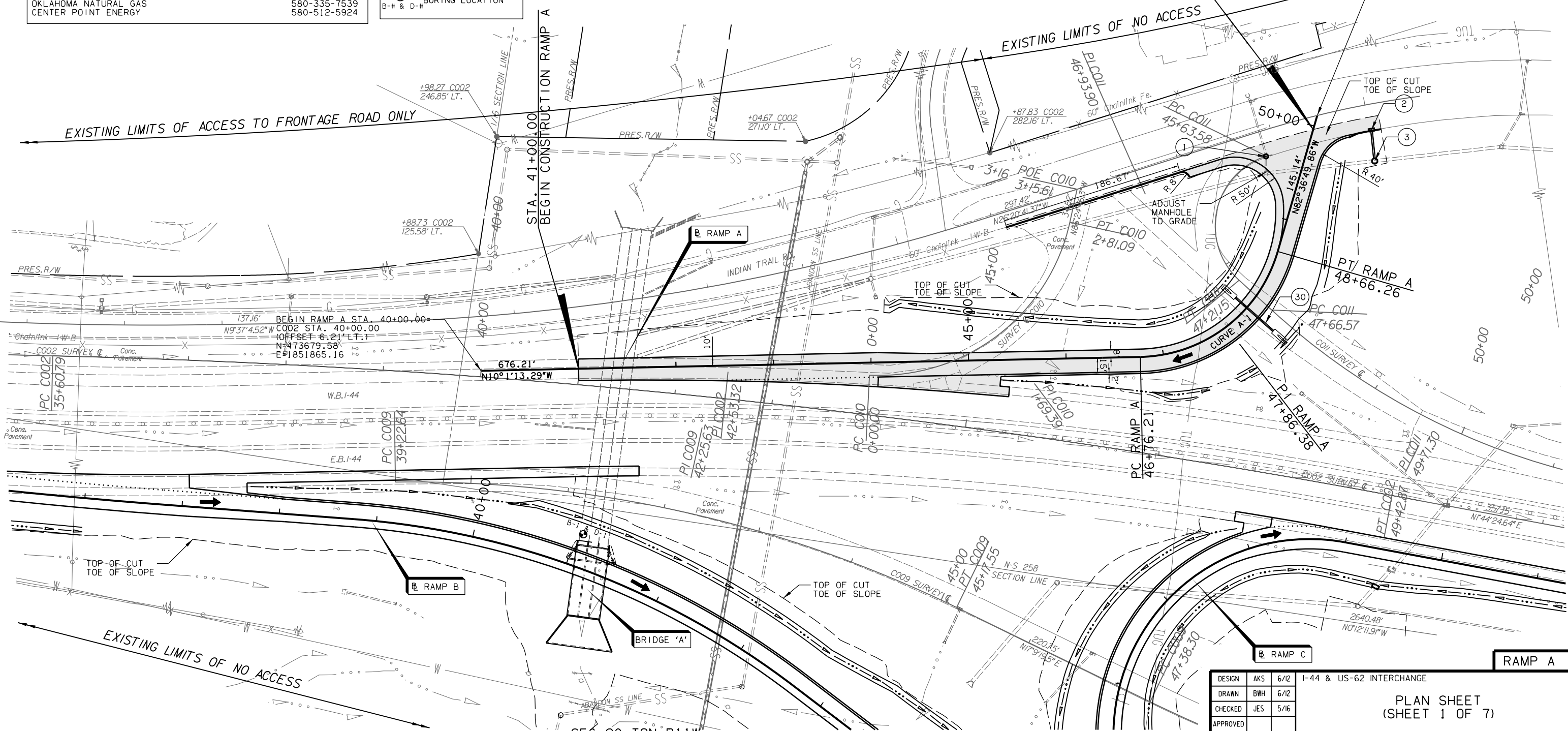
SEE SHEETS 26 - 33 FOR GEOMETRIC DATA

SEE SHEETS 65 - 69 FOR PAVEMENT DETAILS

SEC 19 T2N R11W

STA. 49+96.36
 END CONSTRUCTION RAMP A

END RAMP A STA. 50+11.40=
 C008 STA. 69+50.00
 N=474486.79
 E=1851475.13



SEC 20 T2N R11W

DESIGN	AKS	6/12	1-44 & US-62 INTERCHANGE
DRAWN	BWH	6/12	
CHECKED	JES	5/16	
APPROVED			
SQUAD	GARVER	STATE JOB NO. 27050(04)	SHEET NO. 34

PLAN SHEET
 (SHEET 1 OF 7)